

Anno Domini 2006

Copyright (C) Enzo Ciaffarafa, 1995 - 2005

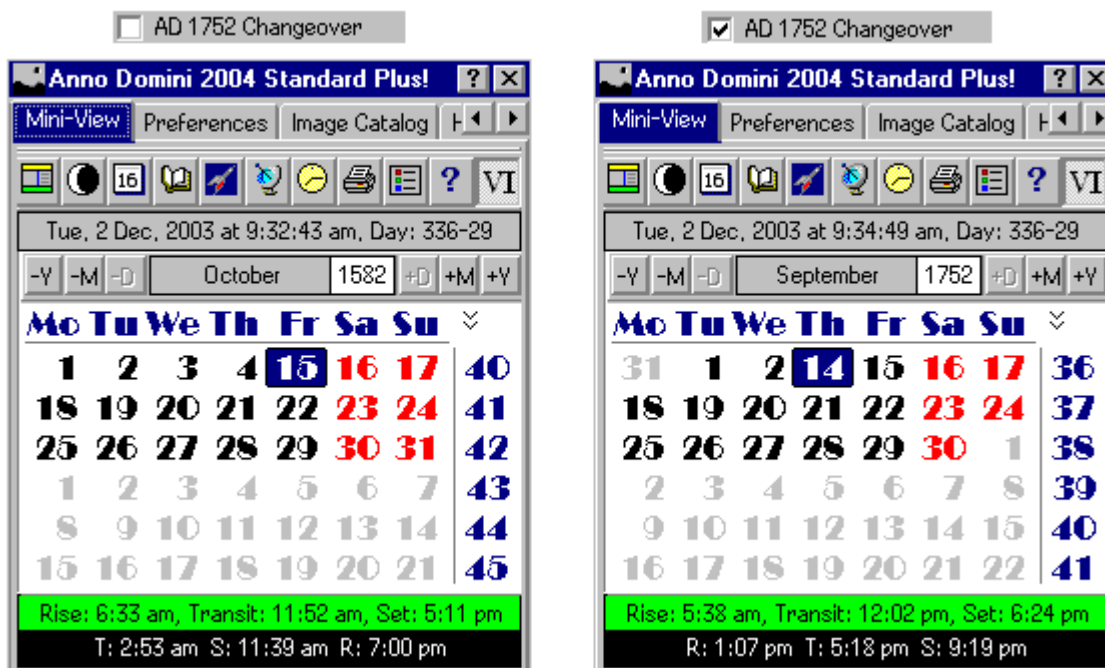
Shareware Calendar for IBM PC + Microsoft Windows XP, 2000, ME, 98SE or 98

Anno Domini Plus! Pack Overview

The Anno Domini Plus! Pack is an optional add-on to Anno Domini Standard that adds a whole host of new features. Available exclusively to registered users of Anno Domini Standard, please view the special benefits of this upgrade below.

Julian Calendar

View calendars prior to the Gregorian Calendar change. The USA and United Kingdom changed to the Gregorian Calendar system on the 14th September 1752 whereas Europe changed to the Gregorian Calendar system on the 15th October 1582. You can switch between the two calendar systems and view any calendar from 1 AD to 1752 AD. Examples of the changeover for the US and Europe are shown below:



The Julian Calendar can be accessed from the main Calendar window or the Mini-View via the button showing the Roman numeral. The button acts as a toggle - when depressed the Julian Calendar is shown, when not depressed, the Gregorian calendar is shown. The month and year of the calendar can be altered by pressing the "+M", "+Y", "-M" and "-Y" buttons as in the Mini-View. You can also select any given year by left-clicking the mouse on the year and entering the year directly. The month can be selected by left-clicking the mouse on the month or using the month-picker as in the normal calendar view. You can select any of the dates in the calendar to view the times of sunrise/transit/sunset and moonrise/transit/moonset for that given date at your chosen location on Earth with a left mouse click. Clicking on the printer icon allows you to print a 12 month calendar report displaying the Julian Calendar for any year from 1 AD to 1752 AD.

3 New Hourly Sounds

3 new hourly sounds are accessible from the Preferences tab. Grandfather Clock, Big Ben and Chime 2 give your hourly reminders whole new meaning, especially Big Ben where you feel as if you are standing outside the Houses of Parliament in London! All sounds are high-quality 16-bit wave samples.

4 New Alarm Sounds

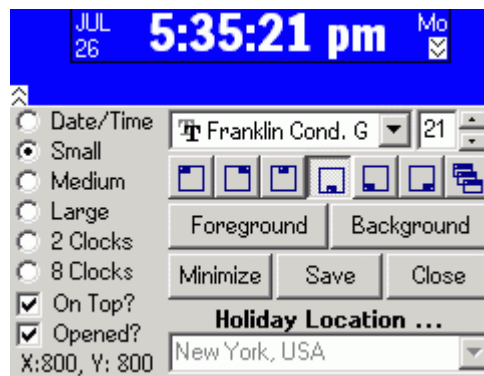
4 new alarm sounds are accessible from the Preferences tab. Alarm mimics an old-fashioned alarm clock which will repeat indefinitely until stopped. Laser Beam and Honk and Rooster give very distinctive sounds to ensure you never miss that important alarm call. All sounds are high-quality 16-bit wave samples. Remember that you can add your own hourly sounds or alarm sounds by using the User Sound option from the Preferences tab and selecting your wave (.WAV) file.

Desktop Clocks

The Desktop Clock provides a handy reminder of the current time on your Windows desktop even when the main Anno Domini window is not visible. There is a choice of four different clock views depending on the size chosen and all clock views show the day of week, date and time. Examples of each are shown below:



The style and position of the clock can be chosen from the main clock control panel which allows you change the font used and it's size and also set the foreground and background colour of the clock. You can also position the clock on your Windows desktop in one of 6 pre-defined positions or alternatively, choose your own specific location on the desktop.



By selecting either the 2 Clocks or 8 Clocks option, you can view the current times of either 2 or 8 chosen locations from anywhere in the world in real-time on your desktop. The clock control panel allows you to select one location as your holiday location for comparison. Below shows an example of Los Angeles as your home location and Moscow as your holiday location.



With the 8 Clocks option you can view the current time for your chosen home location and the remaining 7 locations which you have chosen from the Location tab. Your home location is shown in grey and each clock also shows the current twilight status, i.e. if the box is white it is daytime at that location, if it is navy it is morning twilight, red for evening twilight and black for night time.

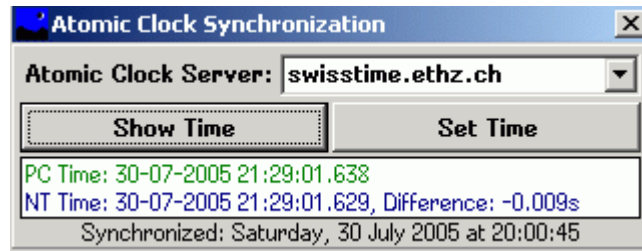


Options in the control panel allow you to automatically open the desktop clocks each time Anno Domini is run and also ensure they always appear above any other open desktop window.

In the bottom left-hand corner of the control panel you will see the current position on the clock on the windows desktop in pixels for the x and y direction. This helps in positioning the clocks when you choose to fix the clocks with your own specific location rather than one of the 6 preset positions.

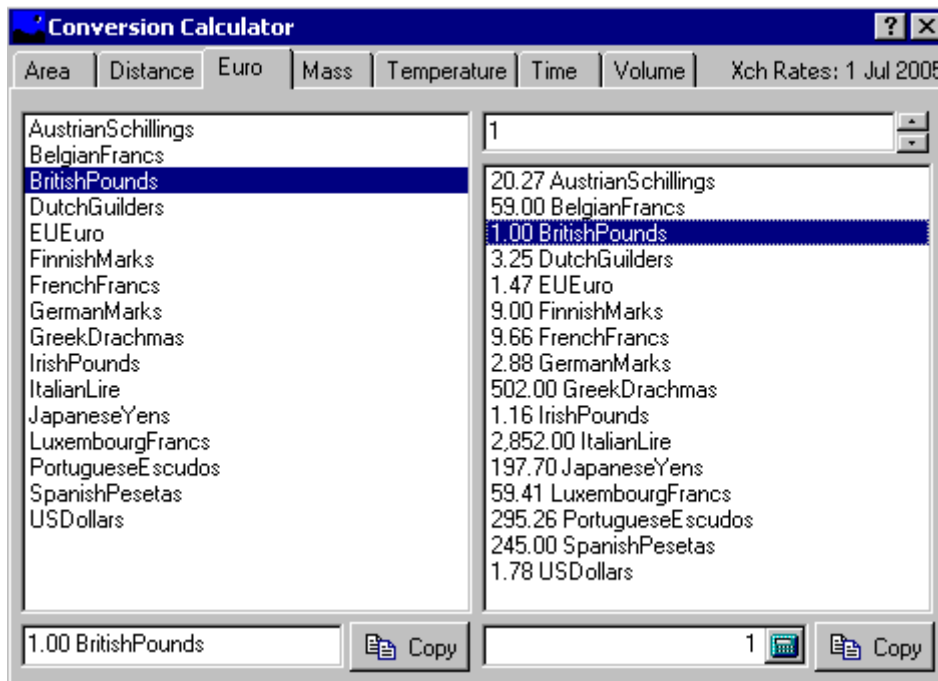
Atomic Clock Synchronization **NEW**

New to Anno Domini 2006 is automatic synchronization of the PC clock. At three separate time intervals during the day (10:00am, 3:00pm and 8:00pm), Anno Domini will automatically connect to an Internet Time Server and ensure your clock is adjusted to match the exact atomic time accurate to thousands of a second. Plus! Pack users have the extra benefit of access to a control panel allowing the PC clock to be adjusted at any time. Other benefits include being able to interrogate the Atomic Clock Server to see the difference between the PC clock and Atomic Clock and being able to change the default server from one on ten servers provided. The server list is also dynamically updated via the Anno Domini web-site.



Conversion Calculator **NEW**

The Conversions tab has a new button which launches the Conversion Calculator. Exclusive to Plus! Pack users, 168 new conversion calculations become available split into seven topics - Area, Distance, Euro, Mass, Temperature, Time and Volume. Results can be manipulated using a drop-down calculator function. A unique feature to the Euro tab is that the latest currency rates for Euro, US Dollars, GB Sterling and Japanese Yen are automatically updated via the Anno Domini web-site from the European Central Bank.



Save/Restore Desktop



The "Save Desktop" button in the Help tab of Anno Domini allows you to record the exact position of your desktop icons for each screen resolution your graphics card is capable of displaying. This allows you to restore your desktop icons to their correct positions after a screen resolution change by simply clicking the "Restore Desktop" button. Anno Domini supports screen resolutions from 640x480 right up to 1600x1200. Each screen resolution can have an individual scheme of icon positions which are automatically stored each time the "Save Desktop" button is pressed. The Save/Restore Desktop function can also be accessed from the Anno Domini menu in the Taskbar.

AutoRun Editor

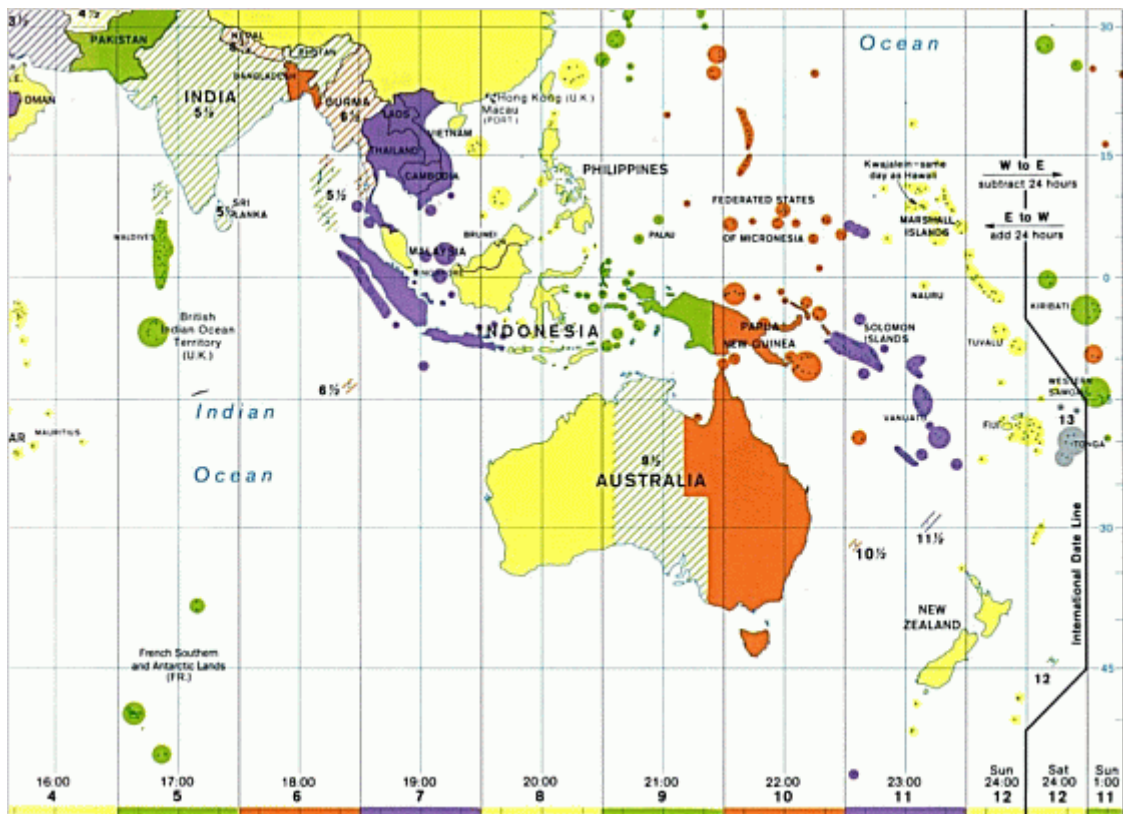
The Autorun Editor allows you to control all programs which automatically start up when you boot your machine. You can either temporarily or permanently disable programs from running on startup or add your own choice of programs to run automatically when you boot into Windows either via the Startup folder or in the Windows registry.

Program	Path	Entry
<input checked="" type="checkbox"/> ATIPTA	C:\Program Files\ATI Technologies\ATI C...	HKEY_LOCAL_MACHINE
<input checked="" type="checkbox"/> Cpulidle	C:\Apps\Cpulidle Extreme\cpulide.exe	HKEY_LOCAL_MACHINE
<input checked="" type="checkbox"/> NeroCheck	C:\WINDOWS\system32\NeroCheck.exe	HKEY_LOCAL_MACHINE
<input checked="" type="checkbox"/> freesurfer	C:\Apps\Free Surfer\fs20.exe	HKEY_LOCAL_MACHINE
<input checked="" type="checkbox"/> CoolSwitch	C:\WINDOWS\System32\taskswitch.exe	HKEY_LOCAL_MACHINE
<input checked="" type="checkbox"/> MBM 5	C:\Apps\Motherboard Monitor 5\MBM5.EXE	HKEY_LOCAL_MACHINE
<input checked="" type="checkbox"/> InCD	C:\Apps\InCD\InCD\InCD.exe	HKEY_LOCAL_MACHINE
<input checked="" type="checkbox"/> AOLdialer	C:\Program Files\Common Files\AOL\ACS...	HKEY_LOCAL_MACHINE
<input checked="" type="checkbox"/> WinampAgent	C:\Apps\Winamp\winampa.exe	HKEY_LOCAL_MACHINE
<input checked="" type="checkbox"/> WinFaxAppPortStarter	wfxsnt40.exe	HKEY_LOCAL_MACHINE
<input checked="" type="checkbox"/> MPFExe	C:\APPS\PERSON~1\MPFTRAY.EXE	HKEY_LOCAL_MACHINE
<input checked="" type="checkbox"/> iTunesHelper	C:\Apps\iTunes\iTunesHelper.exe	HKEY_LOCAL_MACHINE
<input checked="" type="checkbox"/> Anno Domini 2001	d:\Anno Domini 2005\Latest - AD2004 - X...	HKEY_LOCAL_MACHINE
<input checked="" type="checkbox"/> NvCplDaemon	RUNDLL32.EXE C:\WINDOWS\System3...	HKEY_LOCAL_MACHINE
<input checked="" type="checkbox"/> nwiz	nwiz.exe /install	HKEY_LOCAL_MACHINE

Add File to Current User Startup Add File to All Users Startup Save Registry Entries

Large Scale Time Zone/World Map **NEW**

In the Location screen you can now view and pan with the mouse a large-scale map of the whole world which shows all current time-zones. There is a choice of two sizes of viewing screen which you can easily swap between so that the times of each of your 8 chosen cities can still be viewed.



It is planned that other maps will be made available for this function in the future to Plus! users.

Five Extra Calendar Reports

The "1 Month + Events + View" report the calendar for the current month with your chosen events and image from nature.

June 2006

Mo	Tu	We	Th	Fr	Sa	Su
29	30	31	1	2	3	4
5	6	7	8	9	10	11
12	13	14	15	16	17	18
19	20	21	22	23	24	25
26	27	28	29	30	1	2
3	4	5	6	7	8	9

Scheme: Great Britain

Sun 01 Jan	New Year's Day	Thu 16 Jun	Corpus Christi
Mon 02 Jan	New Year Holiday (UK)	Sun 18 Jun	Fathers Day (UK)
Fri 06 Jan	Epiphany	Wed 21 Jun	Summer Begins (12:25)
Tue 14 Feb	Valentine's Day	Thu 13 Jul	Orangeman's Day (NI)
Tue 28 Feb	Shrove Tuesday	Mon 07 Aug	August Holiday (Scot)
Wed 01 Mar	Ash Wednesday	Tue 15 Aug	The Assumption
Wed 01 Mar	St. David's Day	Mon 28 Aug	August Bank Holiday (Eng)
Fri 17 Mar	St. Patrick's Day	Sat 23 Sep	Autumn Begins (04:04)
Mon 20 Mar	Spring Begins (18:20)	Sun 29 Oct	BST Ends
Sun 26 Mar	BST Begins	Mon 30 Oct	October Holiday (Eire)
Sun 26 Mar	Mothers Day (UK)	Tue 31 Oct	Halloween
Sat 01 Apr	April Fool's Day	Wed 01 Nov	All Saints Day
Sun 09 Apr	Palm Sunday	Thu 02 Nov	All Souls Day
Thu 13 Apr	Mundy Thursday	Sun 05 Nov	Guy Fawkes Night (UK)
Fri 14 Apr	Good Friday	Sun 12 Nov	Remembrance Sunday (UK)
Sat 15 Apr	Easter Saturday	Thu 30 Nov	St. Andrew's Day
Sun 16 Apr	Easter Sunday	Sun 03 Dec	Advent Sunday
Mon 17 Apr	Easter Monday	Fri 08 Dec	The Immaculate Conception
Sun 23 Apr	St. George's Day	Fri 22 Dec	Winter Begins (00:23)
Mon 01 May	May Day Bank Holiday (Eng)	Sun 24 Dec	Christmas Eve
Thu 25 May	Ascension Day	Mon 25 Dec	Christmas Day
Mon 29 May	Spring Bank Holiday (Eng)	Mon 25 Dec	Christmas Day Holiday (UK)
Mon 05 Jun	June Holiday (Eire)	Tue 26 Dec	Boxing Day (UK)
Mon 05 Jun	Whit Monday	Tue 26 Dec	Boxing Day Holiday (UK)
Sun 11 Jun	Trinity Sunday	Sun 31 Dec	New Year's Eve

The "1 Year + Events" report shows a 12 month calendar with all events occurring for the selected year and event scheme.

2003

Mo	Tu	We	Th	Fr	Sa	Su
1	2	3	4	5	6	7
8	9	10	11	12	13	14
15	16	17	18	19	20	21
22	23	24	25	26	27	28
29	30	31				

Scheme: Great Britain

Wed 01 Jan	New Year Holiday (UK)	Sun 15 Jun	Trinity Sunday
Wed 06 Jan	Epiphany	Thu 19 Jun	Corpus Christi
Mon 06 Jan	Epiphany	Sat 21 Jun	Summer Begins (19:01)
Fri 14 Feb	Valentine's Day	Thu 10 Jul	Orangeman's Day (NI)
Sat 01 Mar	St. David's Day	Mon 04 Aug	August Holiday (Scot)
Tue 04 Mar	Shrove Tuesday	Fri 15 Aug	The Assumption
Wed 05 Mar	Ash Wednesday	Mon 25 Aug	August Bank Holiday (Eng)
Mon 17 Mar	St. Patrick's Day	Tue 23 Sep	Autumn Begins (10:36)
Fri 21 Mar	Spring Begins (00:53)	Sun 28 Oct	BST Ends
Sun 30 Mar	BST Begins	Mon 27 Oct	October Holiday (Eire)
Sun 30 Mar	Mothers Day (UK)	Fri 31 Oct	Halloween
Tue 01 Apr	April Fool's Day	Sat 01 Nov	All Saints Day
Sun 13 Apr	Palm Sunday	Sun 02 Nov	All Souls Day
Thu 17 Apr	Mundy Thursday	Wed 05 Nov	Guy Fawkes Night (UK)
Fri 18 Apr	Good Friday	Sun 09 Nov	Remembrance Sunday (UK)
Sat 19 Apr	Easter Saturday	Sun 30 Nov	Advent Sunday
Sun 20 Apr	Easter Sunday	Sun 30 Nov	St. Andrew's Day
Mon 21 Apr	Easter Monday	Mon 08 Dec	The Immaculate Conception
Wed 23 Apr	St. George's Day	Mon 22 Dec	Winter Begins (06:54)
Mon 05 May	May Day Bank Holiday (Eng)	Wed 24 Dec	Christmas Eve
Mon 05 May	Spring Bank Holiday (Eng)	Thu 25 Dec	Christmas Day
Thu 29 May	Ascension Day	Thu 25 Dec	Christmas Day Holiday (UK)
Mon 02 Jun	June Holiday (Eire)	Fri 26 Dec	Boxing Day (UK)
Mon 02 Jun	Whit Monday	Fri 26 Dec	Boxing Day Holiday (UK)
Sun 15 Jun	Fathers Day (UK)	Wed 31 Dec	New Year's Eve

The "200 Year Calendar" allows you to find any date between 1889 and 2102 without the need for a PC. An example is shown below:


A	Mo Tu We Th Fr Sa Su 1 2 3 4 5 6 7 8 9 10 11 12 13 14 15 16 17 18 19 20 21 22 23 24 25 26 27 28 29 30 31	B	Mo Tu We Th Fr Sa Su 1 2 3 4 5 6 7 8 9 10 11 12 13 14 15 16 17 18 19 20 21 22 23 24 25 26 27 28 29 30 31	C	Mo Tu We Th Fr Sa Su 1 2 3 4 5 6 7 8 9 10 11 12 13 14 15 16 17 18 19 20 21 22 23 24 25 26 27 28 29 30 31	D	Mo Tu We Th Fr Sa Su 1 2 3 4 5 6 7 8 9 10 11 12 13 14 15 16 17 18 19 20 21 22 23 24 25 26 27 28 29 30 31	E	Mo Tu We Th Fr Sa Su 1 2 3 4 5 6 7 8 9 10 11 12 13 14 15 16 17 18 19 20 21 22 23 24 25 26 27 28 29 30 31	F	Mo Tu We Th Fr Sa Su 1 2 3 4 5 6 7 8 9 10 11 12 13 14 15 16 17 18 19 20 21 22 23 24 25 26 27 28 29 30 31	G	Mo Tu We Th Fr Sa Su 1 2 3 4 5 6 7 8 9 10 11 12 13 14 15 16 17 18 19 20 21 22 23 24 25 26 27 28 29 30 31
----------	---	----------	---	----------	---	----------	---	----------	---	----------	---	----------	---

1889	1890	1891	1892	1893
1894	1895	1896	1897	1898
1899	1900	1901	1902	1903
1904	1905	1906	1907	1908
1909	1910	1911	1912	1913
1914	1915	1916	1917	1918
1919	1920	1921	1922	1923
1924	1925	1926	1927	1928
1929	1930	1931	1932	1933
1934	1935	1936	1937	1938
1939	1940	1941	1942	1943
1944	1945	1946	1947	1948
1949	1950	1951	1952	1953
1954	1955	1956	1957	1958
1959	1960	1961	1962	1963
1964	1965	1966	1967	1968
1969	1970	1971	1972	1973
1974	1975	1976	1977	1978
1979	1980	1981	1982	1983
1984	1985	1986	1987	1988
1989	1990	1991	1992	1993
1994	1995	1996	1997	1998
1999	2000	2001	2002	2003
2004	2005	2006	2007	2008
2009	2010	2011	2012	2013
2014	2015	2016	2017	2018
2019	2020	2021	2022	2023
2024	2025	2026	2027	2028
2029	2030	2031	2032	2033
2034	2035	2036	2037	2038
2039	2040	2041	2042	2043
2044	2045	2046	2047	2048
2049	2050	2051	2052	2053
2054	2055	2056	2057	2058
2059	2060	2061	2062	2063
2064	2065	2066	2067	2068
2069	2070	2071	2072	2073
2074	2075	2076	2077	2078
2079	2080	2081	2082	2083
2084	2085	2086	2087	2088
2089	2090	2091	2092	2093
2094	2095	2096	2097	2098
2099	2100	2101	2102	

Jan	A	A	B	B	C	C	D	D	E	E	F	F	G	G	H
Feb	D	D	E	E	F	F	G	G	A	A	B	B	C	C	D
Mar	D	E	E	F	F	G	G	A	A	B	B	C	C	D	H
Apr	G	A	A	B	B	C	C	D	D	E	E	F	F	G	H
May	B	C	C	D	D	E	E	F	F	G	G	A	A	B	H
Jun	E	F	F	G	G	A	A	B	B	C	C	D	D	E	H
Jul	G	A	A	B	B	C	C	D	D	E	E	F	F	G	H
Aug	C	D	D	E	E	F	F	G	G	A	A	B	B	C	H
Sep	F	G	G	A	A	B	B	C	C	D	D	E	E	F	H
Oct	A	B	B	C	C	D	D	E	E	F	F	G	G	A	H
Nov	D	E	E	F	F	G	G	A	A	B	B	C	C	D	H
Dec	F	G	G	A	A	B	B	C	C	D	D	E	E	F	H

The "1 Year + View" calendar report show a full 12 month calendar for the selected year along with the current month's nature image. An example is shown below:

2003



January 2003 Mo Tu We Th Fr Sa Su 1 2 3 4 5 6 7 8 9 10 11 12 13 14 15 16 17 18 19 20 21 22 23 24 25 26 27 28 29 30 31	February 2003 Mo Tu We Th Fr Sa Su 1 2 3 4 5 6 7 8 9 10 11 12 13 14 15 16 17 18 19 20 21 22 23 24 25 26 27 28 29	March 2003 Mo Tu We Th Fr Sa Su 1 2 3 4 5 6 7 8 9 10 11 12 13 14 15 16 17 18 19 20 21 22 23 24 25 26 27 28 29 30 31
April 2003 Mo Tu We Th Fr Sa Su 1 2 3 4 5 6 7 8 9 10 11 12 13 14 15 16 17 18 19 20 21 22 23 24 25 26 27 28 29 30	May 2003 Mo Tu We Th Fr Sa Su 1 2 3 4 5 6 7 8 9 10 11 12 13 14 15 16 17 18 19 20 21 22 23 24 25 26 27 28 29 30 31	June 2003 Mo Tu We Th Fr Sa Su 1 2 3 4 5 6 7 8 9 10 11 12 13 14 15 16 17 18 19 20 21 22 23 24 25 26 27 28 29 30
July 2003 Mo Tu We Th Fr Sa Su 1 2 3 4 5 6 7 8 9 10 11 12 13 14 15 16 17 18 19 20 21 22 23 24 25 26 27 28 29 30 31	August 2003 Mo Tu We Th Fr Sa Su 1 2 3 4 5 6 7 8 9 10 11 12 13 14 15 16 17 18 19 20 21 22 23 24 25 26 27 28 29 30 31	September 2003 Mo Tu We Th Fr Sa Su 1 2 3 4 5 6 7 8 9 10 11 12 13 14 15 16 17 18 19 20 21 22 23 24 25 26 27 28 29 30
October 2003 Mo Tu We Th Fr Sa Su 1 2 3 4 5 6 7 8 9 10 11 12 13 14 15 16 17 18 19 20 21 22 23 24 25 26 27 28 29 30 31	November 2003 Mo Tu We Th Fr Sa Su 1 2 3 4 5 6 7 8 9 10 11 12 13 14 15 16 17 18 19 20 21 22 23 24 25 26 27 28 29 30	December 2003 Mo Tu We Th Fr Sa Su 1 2 3 4 5 6 7 8 9 10 11 12 13 14 15 16 17 18 19 20 21 22 23 24 25 26 27 28 29 30 31

The "3 Year Horizontal Calendar" report shows calendars for 3 consecutive years in a horizontal format. An example is shown below:

Lunar and Solar Eclipses

Partial Solar Eclipse: Monday, 19 April 2004 at 5:35 am
Total Lunar Eclipse: Tuesday, 4 May 2004 at 12:31 pm

Anno Domini now displays the dates and times of when the next partial/total solar or lunar eclipse occurs with an accuracy of plus or minus two minutes in the Astronomy tab. A left mouse click on either displayed time will connect you via the Internet to the NASA Eclipse web-site which gives you very detailed information concerning the eclipse including the best position on Earth for viewing.

Real-Time Astronomy

When the "Real-Time Astronomy" setting is on in the Preferences tab, the main status area of the Calendar tab will show the current Julian Date and the distance of the Earth from the Sun and the Moon updated every second. The exact fraction of the Moon visible from the Earth as a percentage is also shown and updated every minute. T

Sun 243.2° WSW 100% -0.0° Down	Tuesday, 2 December 2003 at 4:38:40 pm Week: 49, Days Gone: 336, Days Left: 29; Star Sign: Sagittarius JD: 2452976.193519, Sun: 91,649,604.34 miles, Moon: 246,694.38 miles Sunrise: 6:41 am, Transit: 11:42 am (10h 2m 31s), Sunset: 4:43 pm	Moon 124.3° SE 69.46% 36.6° Up
---	--	---

100 Extra Quotations

Exactly 100 extra quotations have been added to the standard quotation database covering historical and modern quotations, examples of which are shown below:

- "In the fight between you and the world, back the world." Franz Kafka*
- "Never stand begging for what you have the power to earn." Miguel de Cervantes*
- "Happiness is good health and a bad memory." Ingrid Bergman*
- "Millions long for immortality who don't know what to do on a rainy afternoon." Susan Ertz*
- "Silent gratitude isn't much use to anyone." Gladys Brown Stern*

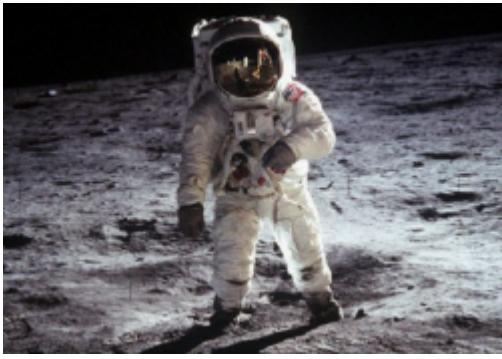
Nature 2 and Nature 3 Image Packs NEW

The Nature 2 and Nature 3 Image Packs add 24 stunning images from nature - two images for each calendar month.



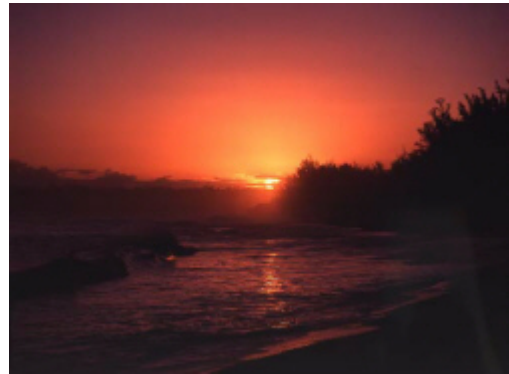
Moon Phases Background Images

Change the look of your Moon Phases tab with either of these two stunning high resolution images of the Apollo Moon missions courtesy of NASA.



Events Background Images

Change the look of your Events tab with these calming images of nature - guaranteed to make you want to go on a vacation!



Astronomy Background Images

Change the look of your Astronomy tab with either of these two stunning high resolution images from the Shuttle missions courtesy of NASA.



The backgrounds to the Moon Phases, Events and Astronomy tabs can be changed via the Preferences tab of Anno Domini and saved so that new selection is remembered each time you start Anno Domini. These six extra background images are in addition to those that are already supplied as standard with the shareware distribution of Anno Domini 2005.

You can also use any of your own images as backgrounds as long as they are in the JPEG .JPG file format. When selecting an image to use as a background, the file dialog will also show you a preview of the image chosen to help you locate the correct image.

It is planned in the future for further stunning images from nature and space will be made available exclusively to Plus! users to further enhance their copy of Anno Domini.

Selecting Your Moon Phases Backgrounds

From the Preferences tab, click the "**Change**" button above the Moon Phases Image legend and an Open File dialog will appear. Select the "Backgrounds" folder from within your Anno Domini directory and you have the choice of the "**Apollo 11 Spaceman_580.JPG**" or "**ASTRONAUGHT2.JPG**" files. Select your desired file and click the "**Open**" button. You will then see a preview of your selected image in the Preferences tab. Finally, click the "**Save Settings**" button to record this setting.

Selecting Your Events Backgrounds

From the Preferences tab, click the "**Change**" button above the Events Image legend and an Open File dialog will appear. Select the "**Backgrounds**" folder from within your Anno Domini directory and you have the choice of the "**SEA3.JPG**" or "**Best_Sunset.JPG**" files. Select your desired file and click the "**Open**" button. You will then see a preview of your selected image in the Preferences tab. Finally, click the "**Save Settings**" button to record this setting.

Selecting Your Astronomy Backgrounds

From the Preferences tab, click the "**Change**" button above the Astronomy Image legend and an Open File dialog will appear. Select the "**Backgrounds**" folder from within your Anno Domini directory and you have the choice of the "**SPACE_AD_1.JPG**" or "**SPACE_AD_2.JPG**" files. Select your desired file and click the "**Open**" button. You will then see a preview of your selected image in the Preferences tab. Finally, click the "**Save Settings**" button to record this setting.

Anno Domini Plus! Pack Summary

- (1) View and print any Julian Calendar from 1 AD to 1752 AD;*
- (2) Desktop Clocks with 4 different sizes, user-defined font and colours;*
- (3) View the local time in each of your favoured locations around the world on your Windows desktop;*
- (4) Save/Restore Desktop function to store and restore your icon positions for any video resolution;*
- (5) AutoRun Editor;*
- (6) Atomic Clock Synchronization*
- (7) Conversion Calculator with 168 new conversions;*
- (8) Large Scale Time Zone/World Map Viewer;*
- (9) 1 Month + Events + View Calendar Report;*
- (10) 1 Year + Events Calendar Report;*
- (11) 200 Year Calendar Report;*
- (12) 1 Year + View Calendar Report;*
- (13) 3 Year Horizontal Calendar Report;*
- (14) Lunar and Solar Eclipse calculator;*
- (15) Real-Time Astronomy showing Julian Date and the distance of the Sun and the Moon from Earth;*
- (16) 100 new extra quotations;*
- (17) Three new Hourly Sounds (Grandfather, Big Ben and Chime 2);*
- (18) Four new Alarm Sounds (Alarm, Laser Beam, Honk and Rooster);*
- (19) Nature 2 and Nature 3 Image Packs with 24 new stunning images from nature;*
- (20) Two new Moon Phase background images;*
- (21) Two new Events background images;*
- (22) Two new Astronomy background images;*

[Click here to download this page in Adobe Acrobat PDF format.](#)

thank
you